

# JFF



**TEXAS**  
The University of Texas at Austin



ALAMO COLLEGES DISTRICT  
San Antonio College

## STRATEGIES FOR SUPPORTING UNDOCUMENTED STUDENTS: 'TOGETHER WE DREAM'

PRESENTED BY

**Mona Aldana-Ramírez**, Director of Student Success, San Antonio College

**Patricia Munsch, Ph.D.**, Associate Dean for Student Engagement Assessment, Suffolk County Community College

**Victor B. Sáenz, Ph.D.**, Department Chair and Faculty, University of Texas at Austin

# Ensuring the Success of Undocumented Students in Community Colleges

VICTOR B. SÁENZ, PHD


---

@VICTORSAENZPHD

CHAIR & ASSOCIATE PROFESSOR,  
EDUCATIONAL LEADERSHIP AND POLICY  
UNIVERSITY OF TEXAS AT AUSTIN

JOBS FOR THE FUTURE STATE NETWORK MEETING

JANUARY 31, 2019



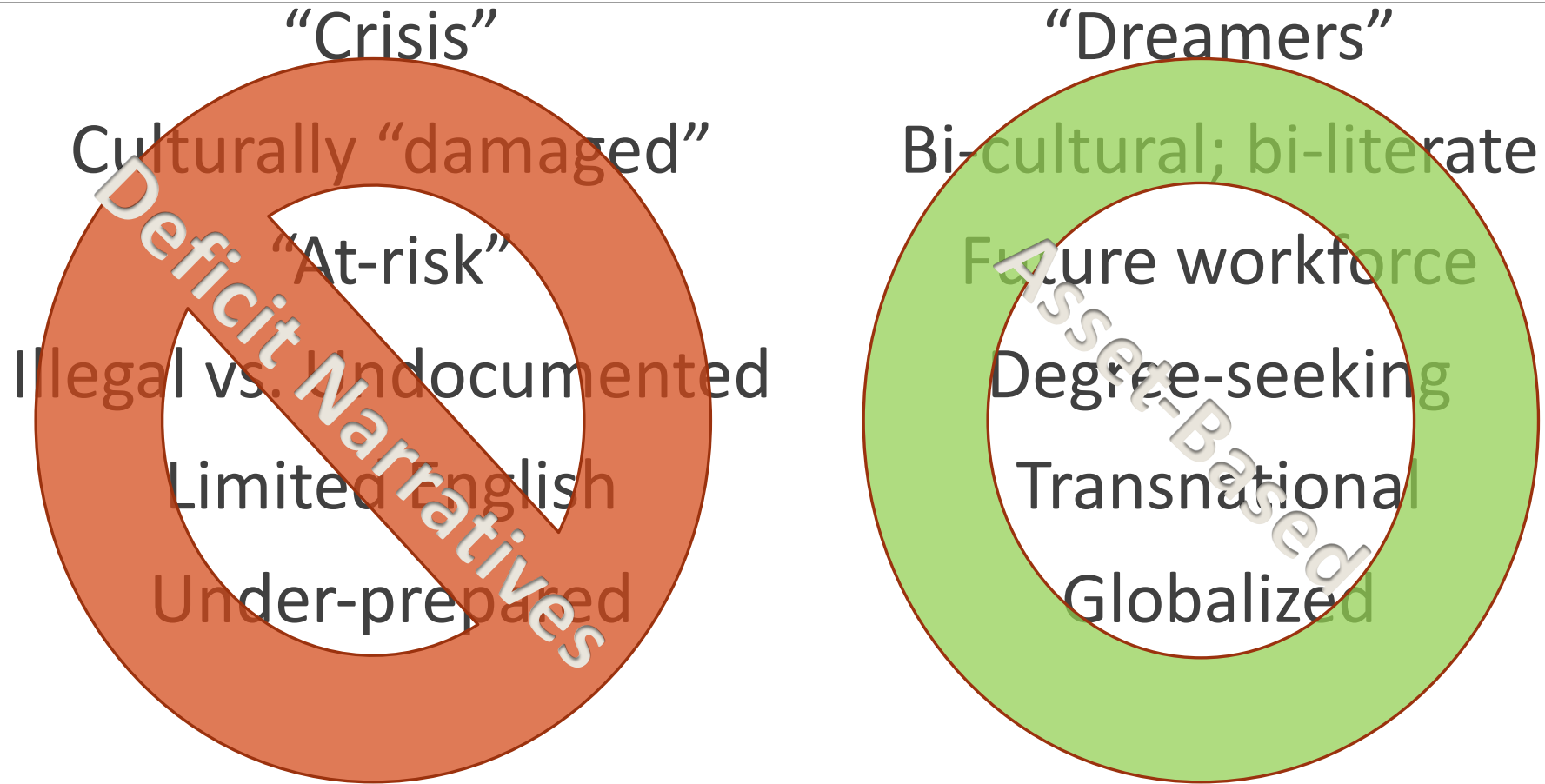
# Opening Thought...

---

The manner in which a **social issue** is **framed** or **defined** not only determines the scope of its stakeholders, but more importantly, its solutions.

(Doherty, 1998)

# Framing (or “narrating”) the Experiences of Undocumented Students

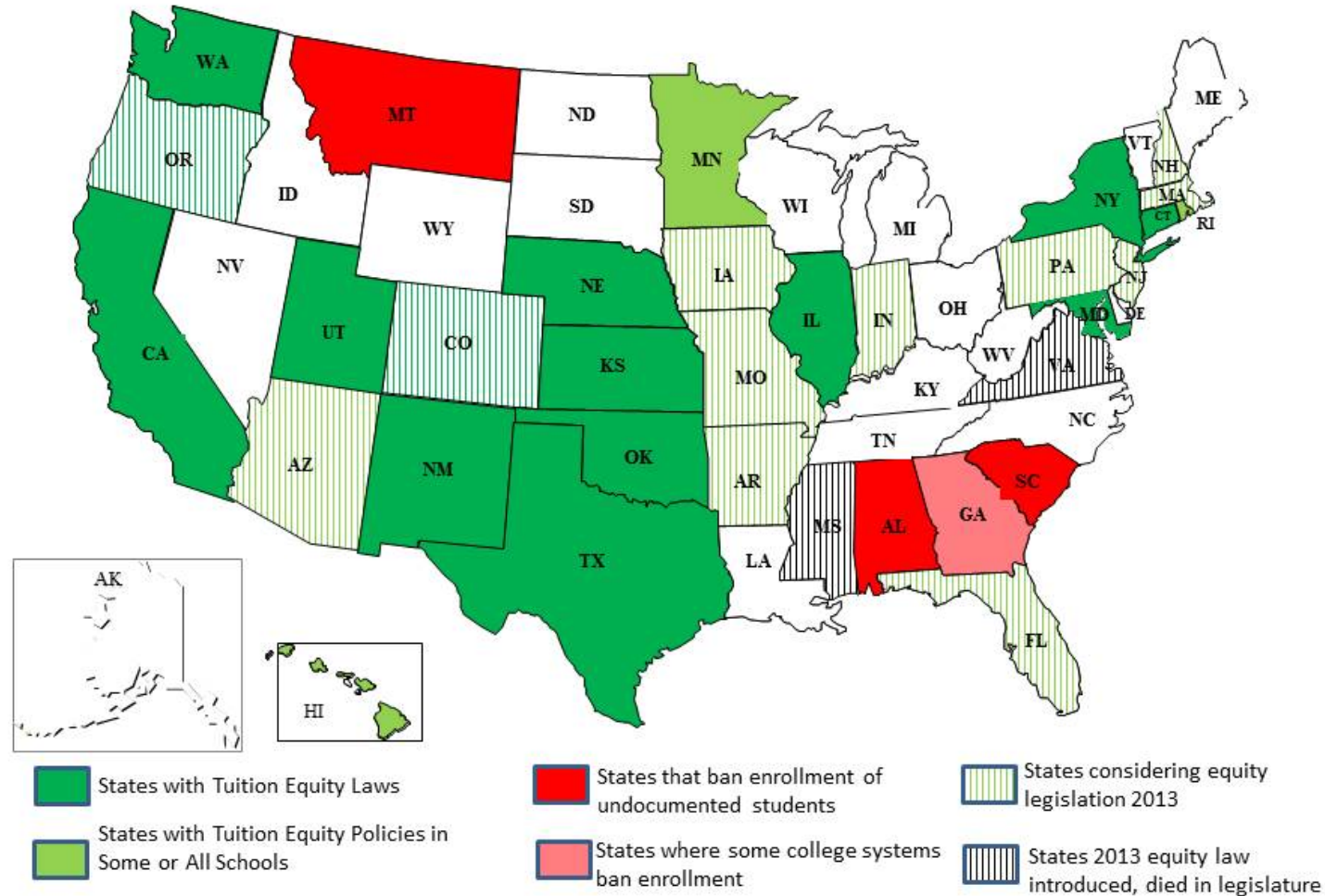




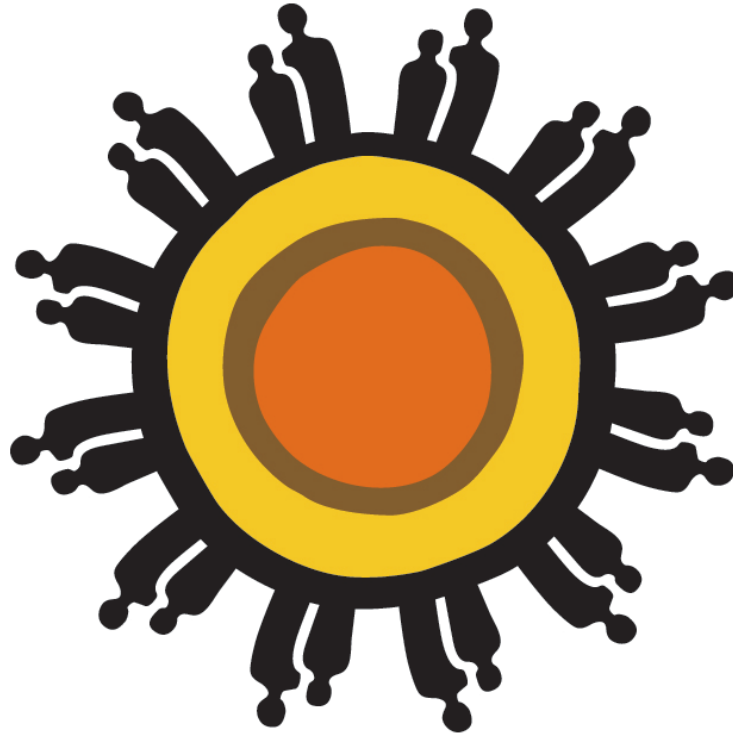
# In-state tuition benefits

## State Laws & Policies on Access to Higher Education for Undocumented Students

Updated 3/25/2013



# From Research to Action...



Project **MALES**

Mentoring to Achieve Latino Educational Success

# Our Response...



## Texas Education Consortium for Male Students of Color

- School district, community college, and university partners
- Affiliated community partners
- Services, Tools & Activities



## Research Institute

- Latino Males P-16
- Virtual Center
- Faculty/Research Affiliates
- Research Briefs
- Latino Male Symposium



## Student Mentoring Program

- School and assets-based, near-peer mentoring philosophy
- Middle and High School male students of color
- Student Mentors/ULN Interns
- Project MALES Student Council
- K-12 School Partners
- Summer Leadership Academy



- *Founded in 2010*
- *Multi-sector institutional partners across the State of Texas*
- *Thought Partners including philanthropic and community-based organizations*
- *Based in the Division of Diversity and Community Engagement, The University of Texas at Austin*

# Texas Educational Consortium for Male Students of Color

## KEY FACTS

- Headquartered at UT-Austin, DDCE
- Launched in June 2013 with 17 members, to now 47
- Partnership with Texas A&M
- Members include: ISDs, CCs, & 4-yr. institutions (public/private)
- Advisory Council
- Spring and Fall Institutes
- Annual Texas Male Leadership Summit
- Grants from GTF, Kresge, THECB, OJJDP, St. David's, Kuhn Foundations



TEXAS EDUCATION CONSORTIUM  
*for MALE STUDENTS of COLOR*

## Texas Education Consortium for Male Students of Color

### AUSTIN

University of Texas at Austin  
(Consortium Headquarters)  
Austin Community College  
Austin ISD  
Huston-Tillotson University

### COLLEGE STATION

Texas A&M University

### COMMERCE

Texas A&M University Commerce

### CORPUS CHRISTI

Del Mar College

### DALLAS

Cedar Valley College  
Eastfield College  
El Centro College  
Mountain View College  
North Lake College  
Richland College

### DENTON

Denton ISD  
North Central Texas College  
University of North Texas

### EL PASO

El Paso Community College  
El Paso ISD  
University of Texas at El Paso

### FORT WORTH

Fort Worth ISD  
Tarrant County College District

### HOUSTON

Houston Baptist University  
Houston Community College

Lone Star College-CyFair  
Lone Star College-North Harris  
Prairie View A&M University  
San Jacinto College  
University of Houston-Downtown

### HUNTSVILLE

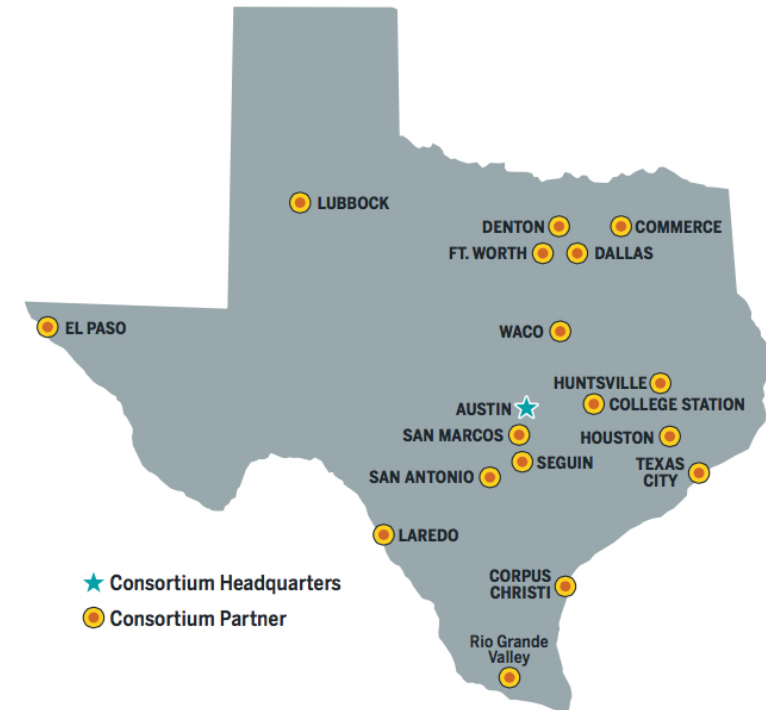
Sam Houston State University

### LAREDO

Laredo Community College

### LUBBOCK

Texas Tech University



★ Consortium Headquarters  
● Consortium Partner

### RIO GRANDE VALLEY

La Jota ISD  
South Texas College  
Texas Southmost College  
University of Texas Rio Grande Valley

### SAN ANTONIO

San Antonio College  
Northeast Lakeview College  
Palo Alto College  
St. Philip's College  
University of Texas at San Antonio

### SAN MARCOS

Texas State University

### SEGUIN

Seguin ISD

### TEXAS CITY

College of the Mainland

### WACO

Baylor University  
McLennan Community College

# What can states do to ensure success of undocumented students in CCs?

## Key Resources

Migration Policy Institute  
American Immigration Council  
Public Policy Institute of California  
Pew Hispanic Center  
ECS, AACC, ACE, etc.

## Avoid Deficit Assumptions & Deficit Responses

Serve all  
undocumented  
students in CCs  
(need more expansive definition)

Critical awareness of  
legal and policy issues  
& challenges facing  
undocumented CC  
students



VICTOR B. SÁENZ, PHD

 @VICTORSAENZPHD

UNIVERSITY OF TEXAS AT AUSTIN

THANK YOU!

---

Email:  
[vsaenz@austin.utexas.edu](mailto:vsaenz@austin.utexas.edu)

USING POLL EVERYWHERE

## FIRST, A MOMENT FOR TECHNOLOGY

If you are on a tablet or computer:

[pollev.com/jffevents](http://pollev.com/jffevents)

OR

If you are on your phone: text **"JFFEVENTS"**  
to **37607**

*You're ready to use poll everywhere!*

**Note: Please register only one device (phone, tablet, computer) on the Wi-Fi!**





# Suffolk County Community College







# Development of the Undocumented Student Task Force

Advocacy

Education

Support





Advocacy

# I STAND

**BE THE CHANGE . TAKE A STAND .**

**WORK WITH US TO CREATE AN**

**EQUITABLE FUTURE FOR ALL .**

**WHAT DO YOU STAND FOR ?**

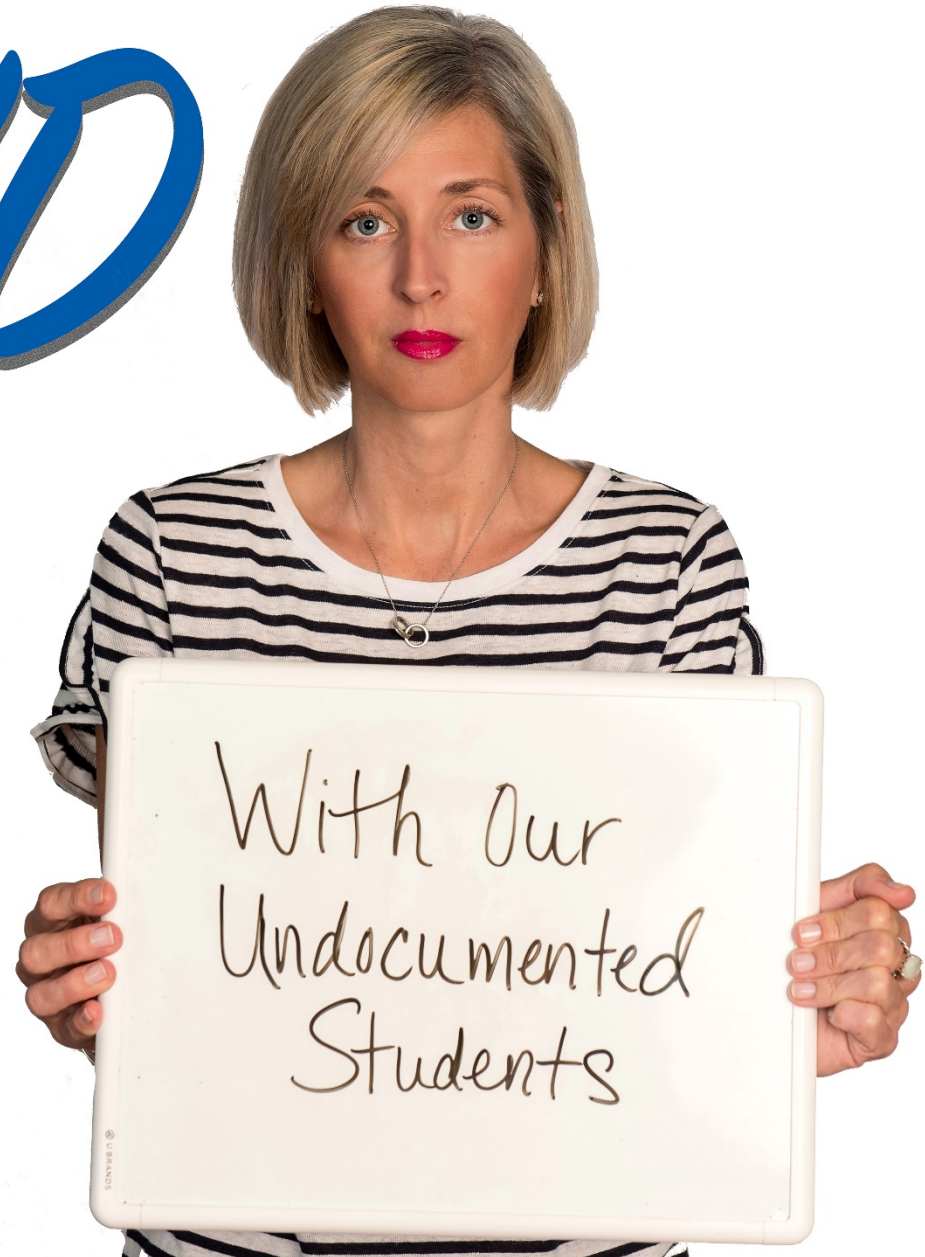
**FOR MORE INFO CONTACT:**

**[www.sunysuffolk.edu/CSJHU](http://www.sunysuffolk.edu/CSJHU)**



Center for  
SOCIAL JUSTICE &  
HUMAN UNDERSTANDING  
featuring the Holocaust Collection

**Created by: THE UNDOCUMENTED STUDENT TASK FORCE**



# Diversity Syllabus Statement

In alignment with our institutional mission and strong support of diversity, equity and inclusion, Suffolk County Community College reaffirms its commitment to providing access to higher education and a welcome environment to all students. No matter your age, race, ethnicity, national origin, gender identity or expression, sexual orientation, family status, U.S. citizenship status, religion, socio-economic status, political ideology, military-connected status, or intellectual or physical ability - you belong here. Therefore, in this class, we will maintain an atmosphere of mutual respect, civil discourse and cross-cultural communication.

The college prohibits discrimination and harassment and you can read more at: [www.sunysuffolk.edu/nondiscrimination](http://www.sunysuffolk.edu/nondiscrimination).



# Education





The Student Government Association and the Undocumented Student Task Force are hosting

# ***The New Reality: Undocumented in America***

A conversation with Patrick Young, Esq about your rights, what to be aware of to stay safe, and how to prepare yourself and your family.

**Wednesday, March 22 - 3:30 PM**

**HSEC Building, MD 105 Lecture Hall • OPEN TO ALL**

Meet with the student government at 2:30p.m. to connect, discuss, and develop questions for Mr. Young. Light refreshments will be served.





Support



## WHAT TO DO IF ICE COMES TO YOUR DOOR



### DO NOT OPEN DOORS

ICE cannot come in without a signed warrant by a criminal court judge. They can only come in if you let them.



### REMAIN SILENT

ICE can use anything you say against you in your immigration case so claim your right to remain silent!

\*Say "I plead the fifth amendment and choose to remain silent".



### DO NOT SIGN

Don't sign anything ICE gives you without talking to an attorney.



### REPORT & RECORD!

Report immediately: UWD hotline 1-844-363-1423.

Take pictures & video unless you're on federal government property.

Take notes of badge numbers, number of agents, time, type of car and exactly what happened!



### FIGHT BACK!

Get a trustworthy attorney & explore all options to fight your case. If detained, you may be able to get bail - don't give up hope! Join your local team to defend yourself from enforcement!



# Things related to your immigration status? Need a resource spot?

There is **FREE** and **CONFIDENTIAL** support available on campus at Suffolk.

## For information, contact

**Sarah Boles (Ammerman Campus)**

Counseling Center

boless@sunysuffolk.edu

631-451-4530

Ammerman Building, Room 209

**Hypatia Martinez (Michael J. Grant Campus)**

Counseling Center

martinhy@sunysuffolk.edu

631-851-6872

Caumsett Hall, Lower Level

**Maggie Marcincuk (Eastern Campus)**

Counseling Center

marcinm@sunysuffolk.edu

631-548-2650

Peconic Building, Room 211

## Immigration Resources for Students

**DACA, TPS and Undocumented Student  
Resource Guide**

**[Libguides.sunysuffolk.edu/dacarenewal](http://libguides.sunysuffolk.edu/dacarenewal)**

**For education and support, contact**

**Center for Social Justice**

csjhu@sunysuffolk.edu

631-451-4117

Huntington Library Room 102 (Ammerman Campus)

**To file a report of discrimination on campus, contact**

**Christina Vargas**

**Chief Diversity Officer/Civil Rights Compliance Officer**

**[www.sunysuffolk.edu/nondiscrimination](http://www.sunysuffolk.edu/nondiscrimination)**

# Questions and Comments

**Patricia Munsch, Ph.D.**

College Associate Dean

for Student Engagement Assessment

[munschp@sunysuffolk.edu](mailto:munschp@sunysuffolk.edu), 631-451-4572



# Together We Dream

## An overview of support for Undocumented and DACA students at San Antonio College, Alamo Colleges District

Mona Aldana-Ramirez  
Director of Student Success  
San Antonio College  
JFF Post Secondary Network Meeting  
January 2019, Austin, TX



ALAMO COLLEGES DISTRICT  
San Antonio College





# About San Antonio College

Enrollment: 20K

One of largest single-campus community college in Texas and the nation

Founded in 1925 and emerged as HSI in 1986

Part of the Alamo Colleges District consisting of 5 colleges with ~50K total enrollment





# District Level Support

Alamo Colleges Chancellor and Board of Trustees

DACA Resources Webpage

<https://www.alamo.edu/district/daca/>

District wide committee composed of faculty and staff from 5 colleges, district offices, chief of police

Undocumented Student Ally Training

Work study opportunities through state financial aid







# Campus Support

Safe Space for ALL Students

Key External partnerships



*Dr. Robert Vela, President of San Antonio College, speaks at a campus information session for*

## DACA SUPPORT GROUP

@ THE STUDENT ADVOCACY CENTER

THURSDAYS 3PM-4:30PM

FOR MORE INFORMATION:

CALL THE STUDENT ADVOCACY CENTER  
AT (210)486-1111

ALAMO COLLEGES DISTRICT  
San Antonio College

For the  
College  
scholars  
college  
much-ne

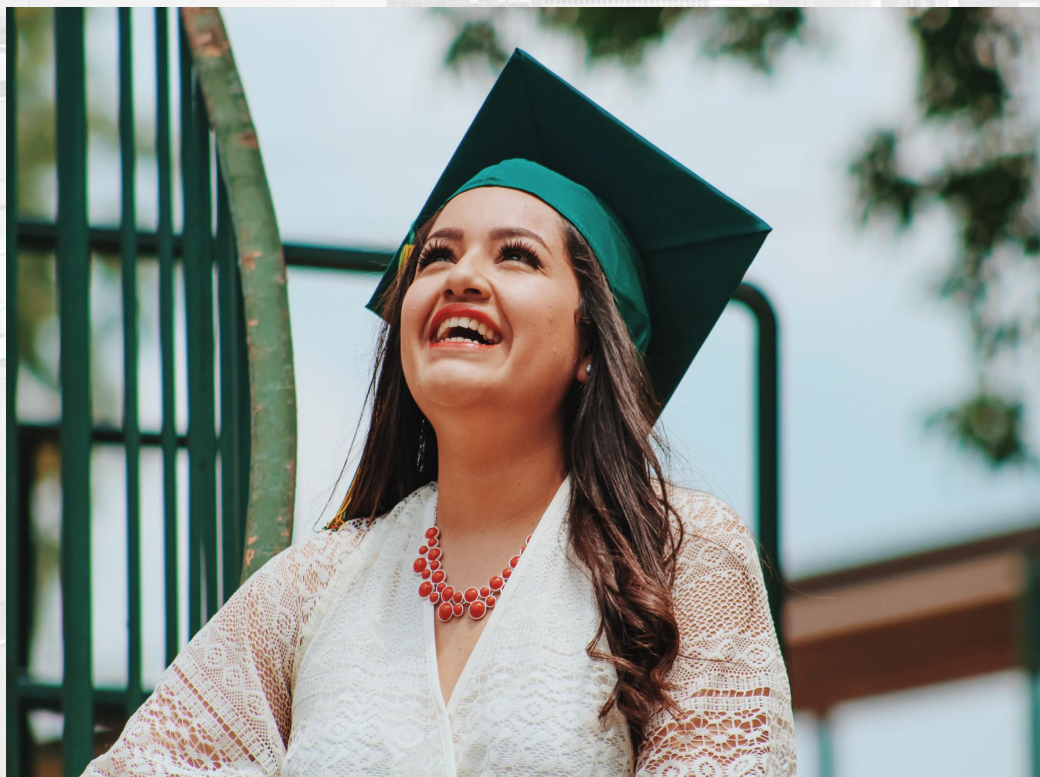
tonio College and  
to provide much-r  
.US is the nation's  
EAMers, which pr  
motivated DACA-eli

DACA-mented students. The district also launched a giving campaign with United Way that allows Alamo employees to make donations for student scholarships. As part of that campaign, monies have been earmarked for undocumented students.

MIGRATION  
IS  
BEAUTIFUL



# Partnerships and Scholarships



Internal Scholarships

Alamo Foundation Scholarship

Partnerships are key

San Antonio Education Partnership

External Scholarships

TheDream.US Scholarship Program



# THE DREAM.US PROGRAM

---

Largest college access and success program for DREAMers in the nation;  
**3,000 Scholars** in 14 states + DC; **75+ Partner Colleges.**

**Scholarships** to highly motivated, low-income DREAMers and **advocacy** for tuition and aid equity.





# NATIONAL AWARD CALCULATION

Award is **primarily for** tuition and fees based on enrollment up to:

- \$7,250/year for High School graduates and up to
- \$14,500/year for Community College Graduates
- \$7,250/year for Community College Graduates in WA & CA
- The amount of their annual award will be based on the cost of tuition and fees based on their enrollment status (i.e., number of credits) up to the maximum annual award.
- Award is not reduced by other aid, scholarships, or grants, unless Scholar's total financial package exceeds estimated cost of attendance based on living arrangement.



# Opportunities for Student Engagement

Welcome Luncheon every semester

Assigned Academic Advisor

Co-sponsor events with Mexican -American Studies Program



## Resources for Practitioners

The Chronicle of Higher Education

TheDream.US “In Their Own Words”

Community College Consortium  
For Immigrant Education

THE CHRONICLE  
of Higher Education

STUDENTS

### Colleges Should Enhance Resources for Undocumented Students, Report Urges. Here’s How Some Are Doing That.

By Andy Tsubasa Field | OCTOBER 22, 2018



United We Dream Action  
Maria Treviño-Rodriguez (center), a U. of Houston junior who works about 40 hours a week, leads a march to Houston’s Harris County Jail in 2016 to protest a law that enables local police forces to carry out the work of immigration-enforcement officers.

**M**aria Ivonne Treviño-Rodriguez, a junior at the University of Houston, has worked four different jobs as a student of them for about 40 hours a week, she says. She’s worked as a counselor for low-income high-school students and as a campaign finance director for a Democratic candidate for the U.S. Congress in her full-time positions, her résumé shows.

“I’m trying to make sure that I am able to survive financially and able to help my family,” she says.

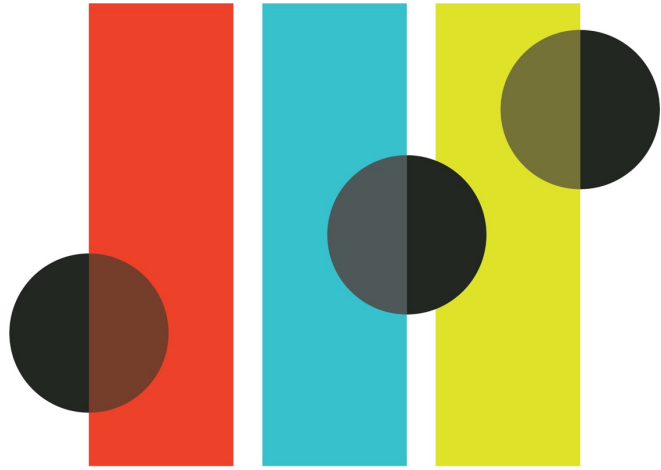
Treviño-Rodriguez is also a beneficiary of Deferred Action for Childhood Arrivals, an Obama-era program best known for temporarily sparing young undocumented immigrants from being deported. The policy, commonly known as DACA, also allows students who were brought to the United States illegally as children to obtain work permits and pay in-state tuition at some colleges and universities, among other things. But it does not make them eligible for federal financial aid or most private scholarships.



### IN THEIR OWN WORDS Higher Education, DACA, and TPS

Results From a National Survey of TheDream.US Scholars





# JFF



**TEXAS**  
The University of Texas at Austin



ALAMO COLLEGES DISTRICT  
San Antonio College

## STRATEGIES FOR SUPPORTING UNDOCUMENTED STUDENTS: 'TOGETHER WE DREAM'

PRESENTED BY

**Mona Aldana-Ramírez**, Director of Student Success, San Antonio College

**Patricia Munsch, Ph.D.**, Associate Dean for Student Engagement Assessment, Suffolk County Community College

**Victor B. Sáenz, Ph.D.**, Department Chair and Faculty, University of Texas at Austin

**Please submit any questions you have for the presenters**