

JFF POSTSECONDARY STATE NETWORK MEETING | JANUARY 2019

MAPPING THE ECOSYSTEM OF EDUCATION AND ECONOMIC MOBILITY

MAKING
RESEARCH
RELEVANT

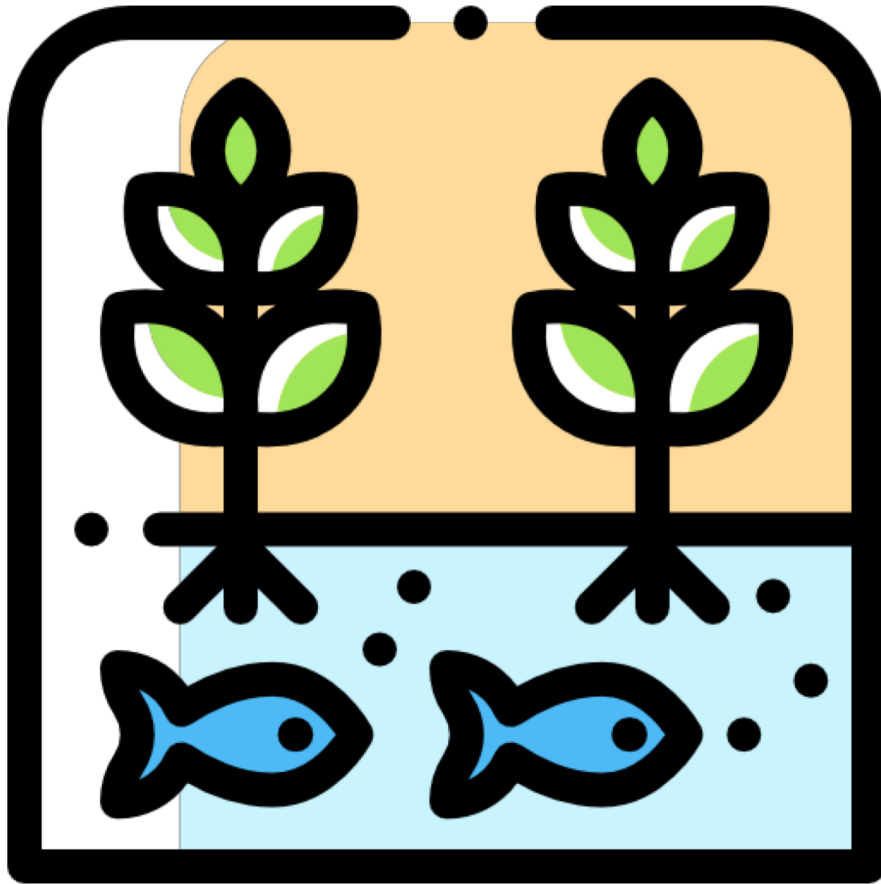
Tori Cirks, Senior Technical Assistance Consultant, AIR
Julita Bailey-Vasco, Program Manager, JFF

Session Goals

- Introduce the concept of ecosystem mapping
- Map actors in the postsecondary ecosystem
- Consider the actions and interactions of ecosystem actors
- Identify opportunities to accelerate and sustain work of the ecosystem

Ecosystem Mapping

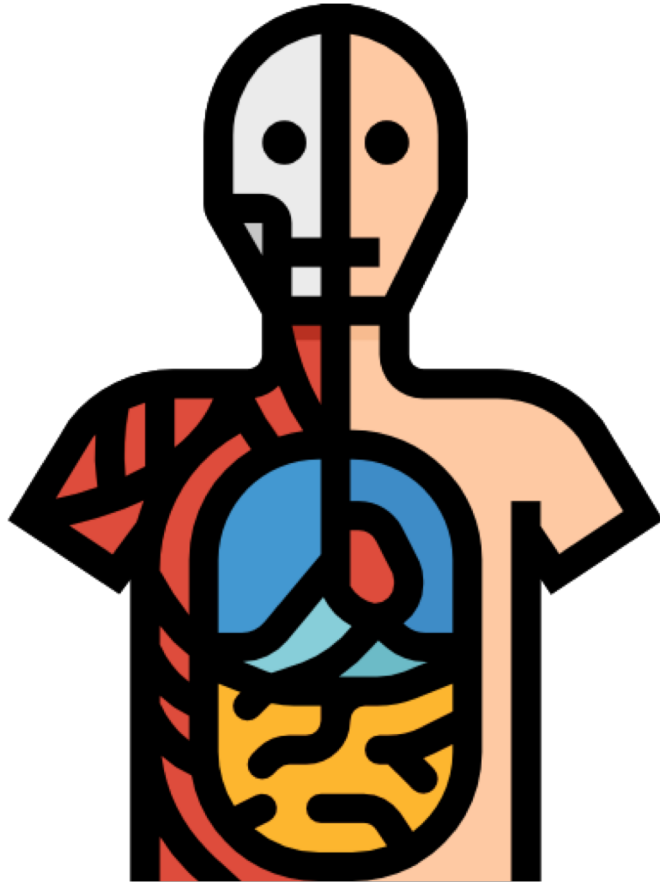
What is an ecosystem?



“An ecosystem is a geographic area where plants, animals, and other organisms, as well as weather and landscapes, work together to form a bubble of life.”

(National Geographic, n.d.)

What is an ecosystem?



“[You] are a unique ecosystem. There is no other ecosystem like your body.”

(American Museum of Natural History, 2016)

What is an ecosystem?



Alpine Dog Brewery
Denver, CO
Photo: North Denver Tribune



Ecosystem Map

[V]isual depiction of the landscape... as a means to identifying gaps in essential services and functions, strategizing beyond symptoms of a problem, and addressing the larger systemic issues and problems at play.

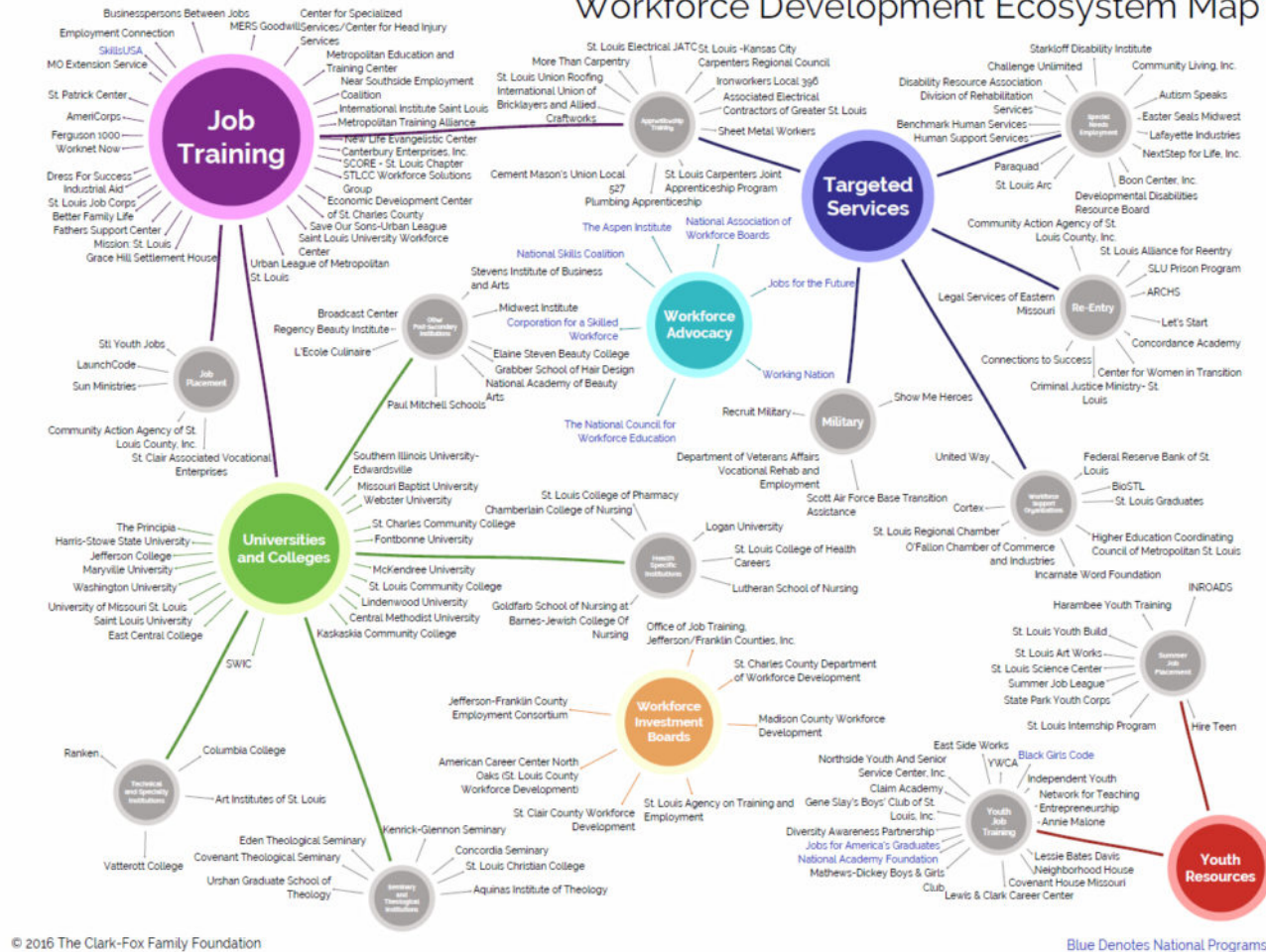
(Anthony & Edsforth, 2016)

East Syracuse Minoa Central School District STEM Learning Ecosystem



St. Louis Region Workforce Development Ecosystem

St. Louis Region Workforce Development Ecosystem Map



Activity: Mapping the Postsecondary Ecosystem

In your table groups...



- Step into character!
- Identify the players/actors in the ecosystem.
- Use one person/organization per sticky note.

Types of Actors

- **Accelerators.** People or organizations that contribute time, funding, information, and/or other resources.
- **Blockers.** People or organizations that you might perceive as working against you or creating/contributing to a problem.
- **Supporters.** People or organizations that are involved in complimentary work or who are allies.
- **Non-existent.** People or organizations that are present but inactive.
- **Other?**

Enabling or Inhibiting Conditions

- **Political.** Federal or state regulations or policies, local administrative processes and structures, etc.
- **Economic.** Funding, labor market trends, etc.
- **Geography.** Location, transportation availability, etc.
- **Infrastructure.** Technology, communications, etc.
- **Other?**

Report Out and Reflection

Report Out

- Who were the key actors identified?
- What opportunities do you see in the ecosystem map?
- What conditions need to be addressed to make progress toward student completion and success goals?
- What surprised you when looking at your ecosystem map?

Reflection

- I like....
- I wish...
- I wonder...

References Layout

- American Museum of Natural History. (2016). *Human microbiome: Your body is an ecosystem*. New York, NY: Author. Retrieved from https://www.amnh.org/content/download/131241/2201972/file/human_microbiome_your_body_is_an_ecosystem_stepread1.pdf
- Anthony, E. & Edsforth, J. (2014). *Strategic planning toolbox: Ecosystem mapping leads to insights, innovation and excitement*. Retrieved from <https://nonprofitnotes.com/ecosystem>
- National Geographic. (August 15, 2011). *Ecosystem*. Retrieved from <https://www.nationalgeographic.org/encyclopedia/ecosystem/>.

MAKING
RESEARCH
RELEVANT

THANK YOU